

Zoedale Introduce EZ Logic from Bernard Controls



Zoedale Plc is the UK Partner of Bernard Controls who is well known for manufacturing high end electric actuators for oil and gas, water and power applications. In order to expand their product portfolio and service manufacturing and low risk industry applications Bernard Controls has launched a range of actuators that are priced to sell. The strap line for the EZ range is 'Simple and Sturdy'. Bernard Controls have used their 70+ years of actuator know how and designed a quality actuator that is ideal for moderate environmental and operational conditions.

'We are very pleased to now be offering the EZ range from Bernard Controls.'

Their actuators are top quality but for some applications the premium range can be price prohibitive. The EZ range is designed for users who don't need a Rolls Royce where a Volkswagen will suffice' Says Tim Guest, Director at Zoedale.

The EZ range is available in IP67 / NEMA 4, with or without local controls, on / off or positioning and in torques from 45Nm to 10,000Nm. Due to the simple design these actuators are available on a 1 – 2 week lead time and Zoedale do hold UK based stock.

For enquiries call Nikki Dickinson at Zoedale on 01234 832832

Left: The strap line for the EZ range is 'Simple and Sturdy' and (right) the actuators are ideal for moderate environmental and operational conditions



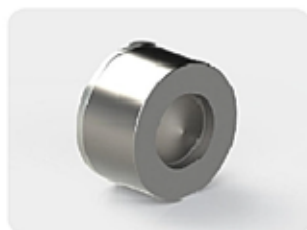
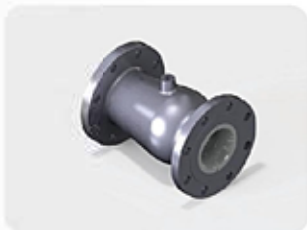
Zoedale Plc

Tel: 01234 832832

Email: enquiries@zoedale.co.uk



Specialists in design, manufacture and assembly of Nozzle Check, Twin Plate, Sprung Disc and Swing Type Check valves.



UK suppliers to energy, water and process industries since 1988



www.abacusvalves.com

Part of The Glen Foundry Group



✉ sales@abacusvalves.com

☎ +44 (0) 1505 681 777

☎ +44 (0) 1505 683 999