

LABEL



**BERNARD[®]
CONTROLS**



//////// Invest in Confidence //////////////////////////////////////

New

Explosionproof
Quarter-turn Actuators
AQXL RANGE

> AQXL range

The essentials

for quarter-turn explosionproof electric actuation



AQX4L & AQX7L

Product overview

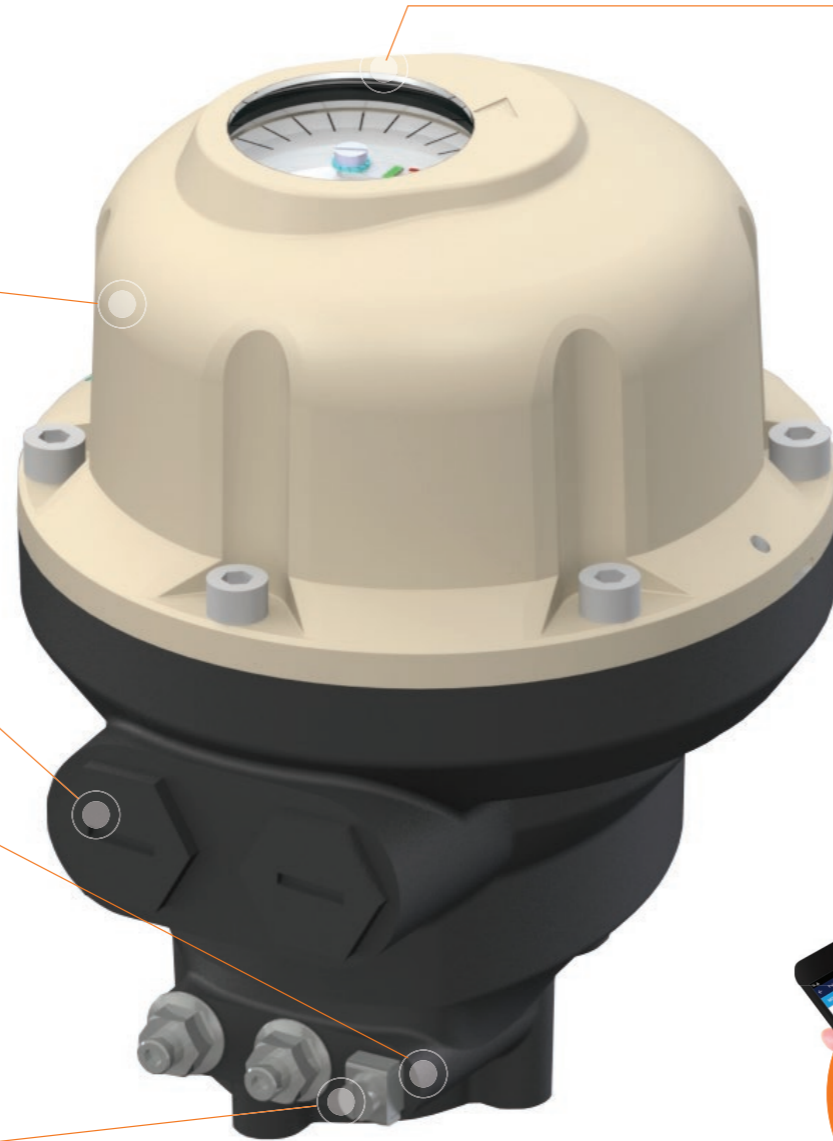
Heavy duty design
Full aluminium enclosure protected by durable powder coating

Cable entries

Manual operation
Emergency intervention via manual hexagonal output 10mm

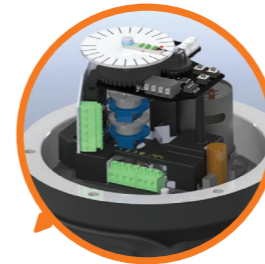


Flange according to ISO 5211
models delivered with standard adaptors



Mechanical position indicator as standard

Check the position of your valve at a glance



New camblock system
Easy set up of the travel limitation system with a standard screwdriver.

New mobile application BC App



> Get access to documentation and Bernard Controls Assistance

Product benefits

COMPACTNESS AND RELIABILITY FOR EXPLOSIVE ATMOSPHERE

• Compact & optimized design

- > Super compact design
- > Product architecture adapted to customers' requirements (70 Nm)
- > Multi-voltage (AC/DC) & multi-frequency products : suitable whatever your location on the globe
- > 24VDC, 2 wires or 12VDC 2 or 3 wires available as an option
- > Short delivery time, even for voluminous project, thanks to large production capacity.
- > Nameplate with ATEX, IECEx and CSA as standards to simplify delivery

• Easy to use

- > Easy commissioning for quick installation on site: pre-wired version available (1-phase only),
- > User-friendly set up of travel limitation system with a standard screwdriver. Cameblock directly accessible at the front.
- > Positioner option (4-20mA)
- > Manual operation via manual hexagonal output: essential for emergency intervention

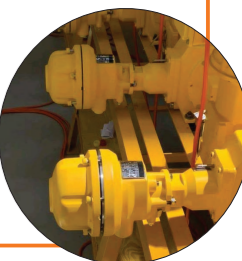
- > BC APP: Bernard Controls new mobile application to get access to full documentation and Assistance.

• Reliable design

- > BERNARD CONTROLS design methodology built-up on the nuclear market highly demanding requirements
- > 80+ years of continuous experience and BC inventor of the compact quarter-turn electric actuator
- > Extended lifetime: more than 100000 cycles attained during endurance tests in laboratory.
- > Heavy duty design: full aluminum enclosure protected by durable powder coating, C4, IP68, large temperature scale.
- > Compliance with international explosionproof standards : ATEX, IEC Ex...
- > Self-locking at all speeds without any additional component
- > S4 Motor Service Duty. Up to 120 starts per hour at peak of operation.
- > Electronic torque limiter for reinforced valve security

For each application, our suitable innovation...

To operate small pumps and choke valves in an explosive atmosphere, we designed and manufactured an innovative AQXL alternative. Explosionproof, compact, and optimized, this multi-turn version operates valves up to 40Nm. Available for regulation in Class B, the multi-turn AQXL is the solution for your industrial applications.



> AQXL RANGE

Explosionproof Quarter-turn Actuators



The essentials

> Range overview



AQXL

AQX4L & AQX7L

- 1x85-260V AC 50/60Hz
+24V DC
- 12V DC (on request)

On-Off Class A as standard

> OPTIONS

- + Position transmitter (4-20mA out)
- + Positioner (4-20mA in/out)
> Class B

Contents

Product specifications - AQXL	3
Product selection	5

AQXL

PRODUCT SPECIFICATIONS

GENERAL	Description	AQXL actuators include a multi-voltage board to supply a 24VDC motor, compact gear case, emergency manual override and standard star-shaped output.
	Torque range	40N.m and 70N.m (10N.m and 40N.m for multi-turn versions)
	Duty Classification	Adapted to process requirements: <ul style="list-style-type: none"> • On-Off: Class A actuators complying with EN15714-2 • Inching/Positioning: Class B actuators complying with EN15714-2
ENCLOSURE - PROTECTION	Casing	<ul style="list-style-type: none"> • Aluminium die casting • Cover fastened by captive and stainless steel screws
	External Protection	<ul style="list-style-type: none"> • Type : Polyester powder coating as standard • Protection: C4 according to ISO 12944 • C5 protection using covering method available as an option • For colors and finishes, please consult us
	Weatherproofness	IP68 NEMA 4X as standard <i>Relative humidity: 0 to 95%.</i>
	Explosionproof	<ul style="list-style-type: none"> • IECEx / ATEX IIB T6, db IIB T6 Gb • NEC500, NEMA 7 Class I div 1 group C & D, Class II group E, F and G. T6
	Ambient temperature range	<ul style="list-style-type: none"> • -20...+60°C / -4 ... +140°F as standard • -40°C / -40°F as an option Other temperatures, please consult us
MOTOR	Motor technology	24VDC brushed motors with 2-wires connection to the control boards
	Motor duty rating	On/Off operation (complying with EN15714-2 Class A) : S4-30% motor duty rating, and Inching/Positioning (complying with EN15714-2 Class B): S4-50% motor duty rating. Up to 120 starts per hour at peak of operation. <i>(Voltage ±10%, frequency ±2%)</i>
MECHANICAL SPECIFICATIONS	Gear design	Actuator is mechanically self-locking
	Manual emergency operation	Manual emergency operation via manual hexagonal output 10mm
	Output flange	Actuator flanges comply with ISO 5211, F05/F07
	Lubrication	The actuators are lubricated for the product lifetime and do not require any special service.
ELECTRICAL SPECIFICATIONS	Power supply	The actuators can operate on a wide range of single phase power supply from 85VAC to 260VAC, and 24VDC (12VDC single power supply available on request).
	Terminal compartment	Push-in type terminals for controls and power supply. Internal and external earth grounding post.
	Conduit entries	2 x 3/4 NPT as standard
POSITION SENSORS	Travel limit systems	<ul style="list-style-type: none"> • Limit switches actuated by adjustable camblock (not available on multi-turn versions) • 2 SPDT switches as standard (Open and Close) + 2 auxiliary switches (customer feedback); 250VAC-5A/ 48VDC-2.5A (resistive load)
	Inching/Positioning control	POSITION FEEDBACK 2 wires for 4-20mA

1/2

AQXL

PRODUCT SPECIFICATIONS

SETTINGS	Application for mobile device	<p>BERNARD CONTROLS new mobile application is available as standard. BERNARD CONTROLS mobile interface allows the user to:</p> <ul style="list-style-type: none"> • Access to the documentation relative to the selected actuator (enter the Serial number) or scan the QR code on the nameplate of the actuator • Access to BERNARD CONTROLS contact information according to the area concerned
CONFORMITY TO EC DIRECTIVES	Compliance with EC Directives	<p>AQXL actuators comply with:</p> <ul style="list-style-type: none"> • directive 2004/108/EC Electromagnetic compatibility • directive 2006/95/EC Low voltage • the following harmonised standards: EN61000- 6-4: Generic emissions standard for industrial environments; EN 61000-6-2: Generic immunity standard for industrial environments; EN 60034-1: Rotating electrical machines; EN 60529: Degrees of protection provided by enclosures (IP ratings code)

2/2

> Product selection

AQX007L FH 015 P A 0 0 0 A 0 I

Actuator Type

Voltage
 FH=1Ph 85-260V 50/60Hz - 24VDC ABC (3 wires);
 DE=Direct Current 24V ABC (3 wires); DF=Direct Current 12V ABC (3 wires);
 DD=Direct current 24V PN (2 wires) ; DG=Direct current 12V PN (2 wires)

Operating time (sec)

Control Type
 P=SWITCH Prewired, A= Analog

Duty & Modulating Classification
 A=Class A;
 B=Class B

SWITCH Options
 0=Without;
 1=Position Transmitter;
 2=Positioner;

Certification
 A= ATEX + IECEx + CSA
 F= ATEX + IECEx + CSA
 Low Temperature
 K= KTL

Output Flange
 0=Standard Flange

Connection Type
 I=Imperial NPT

Actuator Type

Voltage

Operating time (sec)

Control Type

Duty & Modulating Classification

SWITCH Options

Certification

Output Flange

Connection Type



The only application that allows not only to set up your actuator in a few clicks, but also to improve the reliability of your process thanks to key features and data for preventive maintenance. Compatible with our new controls: **LOGIC (v2)** & **INTELLI+® (v3)**



WEATHERPROOF RANGES



The essentials



Quarter-turn AQL RANGE

- 15 to 70 Nm (direct mount)
- Type of Controls: > **Electromechanical SWITCH**
- BC Duty & Modulating Classification

On-Off **A** Inching Positioning **B**

- Environment: > IP68 / C4 (High paint protection option C5)
- > T: -20°C ...+60°C



Quarter-turn AQ RANGE

- 50 to 10,000 Nm (up to 1000 Nm direct mount) *Up to 1,000,000 Nm on request*
- Type of Controls: > **Electromechanical SWITCH**
- > **Smart LOGIC (v2)**
- BC Duty & Modulating Classification

On-Off **A** Inching Positioning **B** Modulating **III**

- Environment: > IP68 / C4 (High paint protection option C5)
- > T: -20°C ...+70°C (Low T° option -40°C)



Multi-turn AT RANGE

- 30 to 500 Nm (direct mount) | *Up to 32,000 Nm on request*
- 10 to 180 rpm (direct mount)
- Type of Controls: > **Electromechanical SWITCH**
- > **Smart LOGIC (v2)**
- Wiring: > Screw Type Terminal
- BC Duty & Modulating Classification

On-Off **A** Inching Positioning **B** Modulating **III**

- Environment: > IP68 / C4 (High paint protection option C5)
- > T: -20°C ...+70°C (Low T° option -40°C)
- Linear applications



WEATHERPROOF RANGES



The dedicated solutions



Multi-turn BT RANGE

- 30 to 500 Nm (direct mount) | *Up to 32,000 Nm on request*
- 10 to 180 rpm (direct mount)
- Type of Controls: > **Smart INTELLI+®(v3)**
- Wiring: **Double-sealing as standard**
- > New terminal plate with pins for easy wiring
- > Quick Connector

Advanced BC Duty & Modulating Classification

On-Off **A+** Inching Positioning **B+** Modulating **III+**

- Environment: > IP68 / C4 (High paint protection option C5)
- > T: -20°C ...+70°C Low T° (Low T° option -40°C)
- Linear applications



SPECIAL REQUESTS

Quarter-turn SQ RANGE

- 45 to 10,000 Nm (up to 800 Nm direct mount) | *Up to 1,000,000 Nm on request*
- With type of Controls: > **Smart INTELLI+®(v2)** With Fieldbus Redundant ...
- > SIL2
- Wiring: Double-sealing with INTELLI+



Multi-turn ST RANGE

- 60 to 2,200 Nm (direct mount) | *up to 20,000 Nm on request*
- 10 to 120 rpm (direct mount) | High speed: up to 190 rpm (direct & <300Nm)
- With type of Controls: > **Smart INTELLI+®(v2)** With Fieldbus Redundant ...
- > SIL2



EXPLOSIONPROOF RANGES

Quarter-turn & Multi-turn SQX & STX RANGES

- SQX: 80 to 800 Nm (direct) & up to 1,000,000 Nm on request
- STX: 25 to 2,200 Nm (direct) & up to 20,000 Nm on request
- Compliance with international explosionproof standards: ATEX, INMETRO, IEC-Ex, EAC-Ex, NEMA 7 & 9...
- Type of Controls: > **Electromechanical SWITCH**
- > **Hardwired**
- > **Smart INTELLI+® (v2)**
- > **SIL2**



BC Duty & Modulating Classification

On-Off **A+** Inching Positioning **B+** Modulating **III**

- Environment: IP68 / C3 up to C5-M / T: -20°C ...+70°C (low T° option: -60°C)
- Special configurations: Corrosion protection, Fire proofing, Extreme temperatures

FAILSAFE RANGES

Quarter-turn Failsafe Actuators FQ RANGE

Fast and shock-free reliable spring-return technology during emergency operation

BC Duty & Modulating Classification

On-Off **A** Inching Positioning **B** Modulating **III**

- Environment: IP67 / C3 / T: -20°C ...+70°C (low T° option -40°C)



Failsafe Actuators FQX RANGE

- Explosionproof versions ATEX-NEMA

Quarter-turn & Linear Failsafe FSeX RANGE

The complete combination of modern electrics and power of hydraulics

BC Duty & Modulating Classification

On-Off **A** Inching Positioning **B** Modulating **III**

- Environment: IP67 / C4 / T: -20°C ...+60°C
- ATEX-NEMA, SIL3

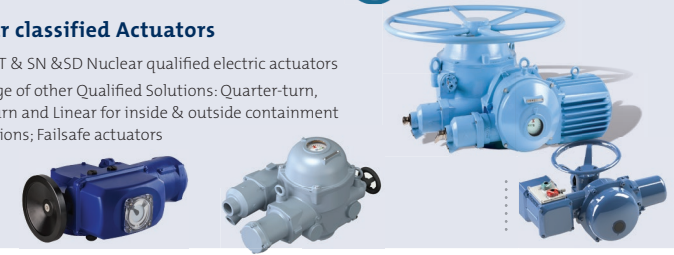


NUCLEAR RANGES



Nuclear classified Actuators

- SQN & ST & SN & SD Nuclear qualified electric actuators
- + Full range of other Qualified Solutions: Quarter-turn, Multi-turn and Linear for inside & outside containment applications; Failsafe actuators



EXPLOSIONPROOF RANGES

Quarter-turn AQXL RANGE

- 40 Nm and 70 Nm
- Compliance with international explosionproof standards: ATEX, IEC-Ex, NEMA 7...
- Type of Controls: > **Electromechanical SWITCH**
- BC Duty & Modulating Classification

On-Off **A** Inching Positioning **B**

- Environment: IP68 / C4 (C5 on request) / T: -20°C ...+60°C
- Linear applications

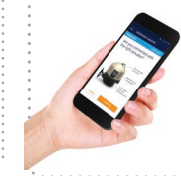


CUSTOMIZED DESIGN & PROJECTS:

At any time and anywhere on the globe, BERNARD CONTROLS teams are available for dedicated support. From the design stage to installation, commissioning, maintenance and training, our experts help you to define and implement the most appropriate solution to your specific needs thanks to our local R&D centers, test labs, calculation tools and training center.



NEW GENERATION OF SMART CONTROLS



The main functions you expect from modern integrated controls



Advanced control solution for your critical applications!

BERNARD CONTROLS GROUP

CORPORATE HEADQUARTERS

4 rue d'Arsonval - CS 70091 / 95505 Gonesse CEDEX France / Tel. : +33 (0)1 34 07 71 00 / Fax : +33 (0)1 34 07 71 01 / mail@bernardcontrols.com

CONTACT BY OPERATING AREAS

> AMERICAS

NORTH AMERICA

BERNARD CONTROLS UNITED STATES
HOUSTON

inquiry.usa@bernardcontrols.com
Tel. +1 281 578 66 66

SOUTH AMERICA

BERNARD CONTROLS LATIN AMERICA
inquiry.southamerica@bernardcontrols.com
Tel. +1 281 578 66 66

> ASIA

CHINA

BERNARD CONTROLS CHINA &
BERNARD CONTROLS CHINA NUCLEAR
BEIJING

inquiry.china@bernardcontrols.com
Tel. +86 (0) 10 6789 2861

KOREA

BERNARD CONTROLS KOREA
SEOUL

inquiry.korea@bernardcontrols.com
Tel. +82 (0)2 2183 6226

SINGAPORE

BERNARD CONTROLS SINGAPORE
SINGAPORE

inquiry.singapore@bernardcontrols.com
Tel. +65 65 654 227

> EUROPE

BELGIUM

BERNARD CONTROLS BENELUX
NIVELLES (BRUSSELS)

inquiry.belgium@bernardcontrols.com
inquiry.holland@bernardcontrols.com
Tel. +32 (0)2 343 41 22

FRANCE

BERNARD CONTROLS FRANCE &
BERNARD CONTROLS NUCLEAR FRANCE
GONESSE (PARIS)

inquiry.france@bernardcontrols.com
Tel. +33 (0)1 34 07 71 00

GERMANY

BERNARD CONTROLS DEUFRA
TROISDORF (KÖLN)

inquiry.germany@bernardcontrols.com
Tel. +49 2241 9834 0

ITALY

BERNARD CONTROLS ITALIA
RHO (MILANO)

inquiry.italy@bernardcontrols.com
Tel. +39 02 931 85 233

RUSSIA

BERNARD CONTROLS RUSSIA

inquiry.russia@bernardcontrols.com
Tel. +33 (0)1 34 07 71 00

SPAIN

BERNARD CONTROLS SPAIN
MADRID

inquiry.spain@bernardcontrols.com
Tel. +34 91 30 41 139

UNITED KINGDOM

BERNARD CONTROLS UNITED KINGDOM

inquiry.uk@bernardcontrols.com
Tel. +44 (0)7435 266310

> INDIA, MIDDLE EAST & AFRICA

AFRICA

BERNARD CONTROLS AFRICA
ABIDJAN - IVORY COAST

inquiry.africa@bernardcontrols.com
Tel. + 225 21 34 07 82

INDIA

BERNARD CONTROLS INDIA

inquiry.india@bernardcontrols.com
Tel. +971 4 880 0660

MIDDLE-EAST

BERNARD CONTROLS MIDDLE-EAST
DUBAI - U.A.E.

inquiry.middleeast@bernardcontrols.com
Tel. +971 4 880 0660

More than 50 agents and distributors worldwide. Contact details on www.bernardcontrols.com

BROCHURE_A0XL_ENG_GRP_rev01J
This document and the contents here of are proprietary to Bernard Controls. It can be amended
and changed without prior notice. Any unauthorized reproduction is strictly prohibited.